



**Patch Authority Plus**, ScriptLogic's comprehensive, enterprise-class patch management solution, enhances security and simplifies the process of updating Windows desktops and servers from a central location. Patch Authority Plus' rich interface eases the task of updating desktops and servers with the latest patches, and deploys updates in just two simple steps.

With exploits for known vulnerabilities unleashed on the Internet within as little as 25 days from the release of new patches from Microsoft, it is imperative your desktops and servers be regularly updated to keep them safe from attack.

### SCALABLE SOLUTION

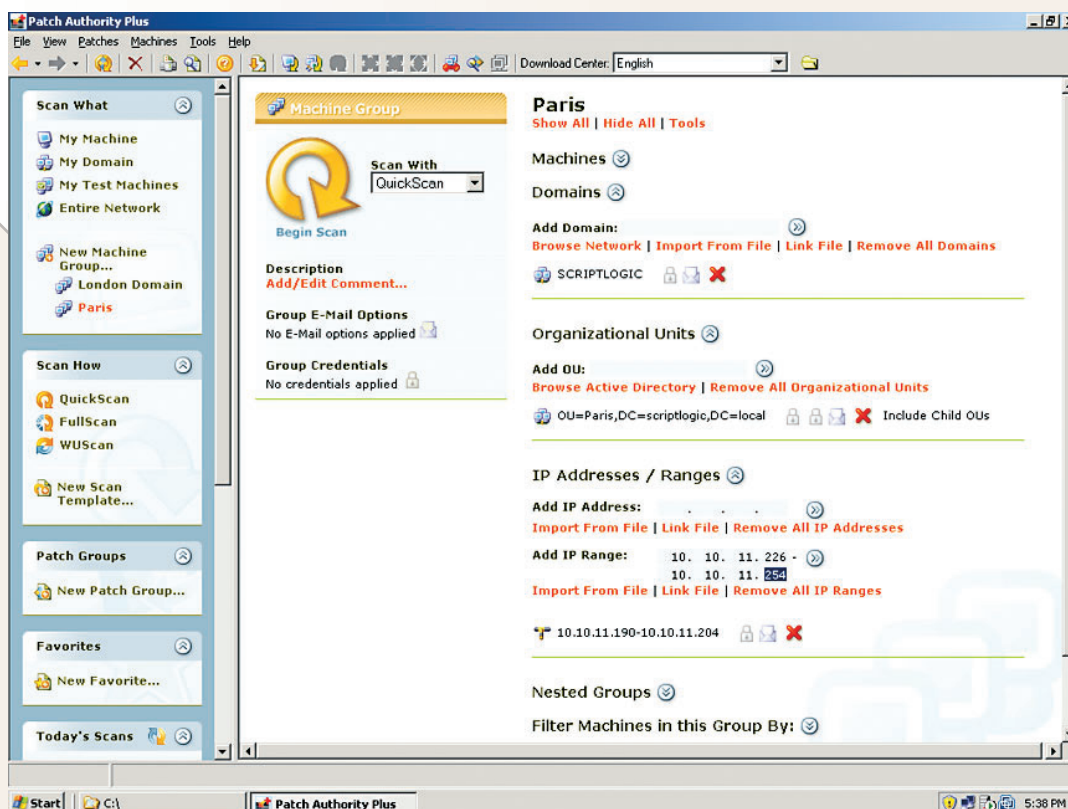
With Patch Authority Plus (PA+), administrators can patch desktops and servers from a single, easy to use interface. At its simplest, patch management with PA+ is an easy 2-step process, but PA+ can also be scaled to a 100,000 machine enterprise using Patch Groups to

group machines, Distribution Servers for localized deployment and Deployment Templates for defining the what, how and when of patch deployment.

### COMPREHENSIVE PATCHING

Powered by Shavlik's industry-recognized HFNetChk technology, PA+ patches desktops and servers with all available OS and application-specific patches immediately upon availability. Patches can be deployed instantly from an interactive console, or scheduled for deployment at the most suitable time, with extensive control over reboot options.

Patch Authority Plus' simple interface empowers you to easily select, scan, deploy patches.



### KEY BENEFITS

#### Enhance Security

Protect desktops and servers from attacks that exploit un-patched computers.

#### Enforce Compliance

Patches can be grouped to create a secure machine baseline. Reporting capabilities demonstrate compliance.

#### Comprehensive

#### Enterprise Management

Manage networks of Windows desktops and servers of any size. Selection, Deployment and Reporting features cover the patch management cycle.

#### Less Downtime,

#### Tighter Password Control

Maintain the health and security of Windows services on servers and desktops across the enterprise.

### KEY FEATURES

#### Patch Detail

Information on patches includes severity levels, platforms affected and the files and registry values modified by each patch.

#### Granular Machine Selection

Use Active Directory OUs, IP Address ranges, System Type, Server (such as IIS or SQL), or imported list to determine which machines will be grouped for management.

#### Flexible Deployment

Deploy patches from remote distribution servers with extensive control over whether when reboots occur after patch installation.

#### Powerful Reporting

Built-in reports include executive summaries, and top ten lists with charts and graphs and PAP can also e-mail scan results. Reports can be generated or viewed using a web portal or any standard reporting package.

#### Control Services on Multiple Machines

Centralize administration and management of services on desktops and servers, including easy updates of service account passwords.

#### Custom Patches

Create patch definitions via XML files.



## EXTENSIVE REPORTING

A complete patch management solution includes extensive reporting to allow executives, compliance officers and administrators to gain a full understanding of the current state of security on their network. Patch Authority Plus comes with over 20 reports providing vital information regarding patches, scans and deployment results.

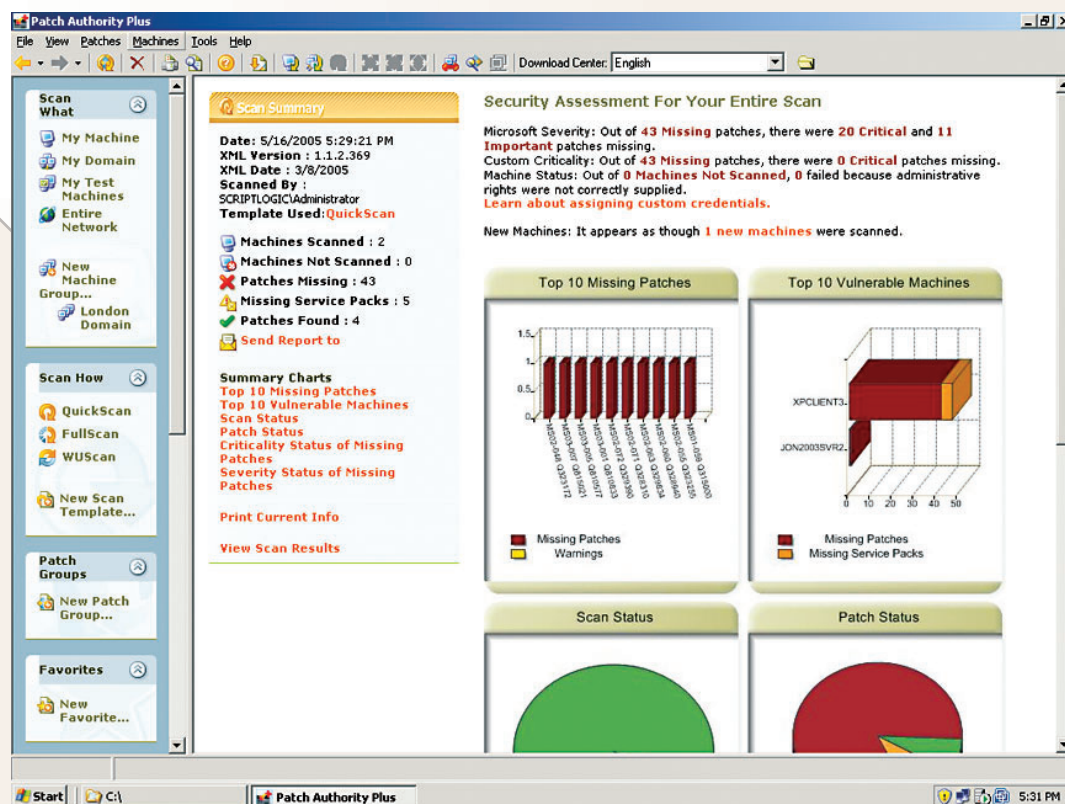
## EXTENSIBLE PATCHING

With Patch Authority Plus, administrators are not limited to just patching Microsoft products; custom patches can be generated using XML files to specify files and registry modifications required. This allows administrators to patch 3rd-party and even in-house applications.

## INCREASED SECURITY

To further secure your desktops and servers, Patch Authority Plus is bundled with Service Explorer, which gives administrators the power to simultaneously manage and secure the Services and Tasks on multiple servers and desktops running Windows NT/2000/XP/2003. Services on multiple computers can be started, stopped, restarted and deleted, and startup settings and passwords can be easily controlled from a single interface, keeping your desktops and servers compliant with your company's password and configuration policies and ensuring that services run smoothly after patching.

Built-in Reporting means a complete Patch Management lifecycle.



## F.A.Q.

### What is the "Plus"?

Patch Authority Plus is bundled with ScriptLogic's Service Explorer providing complete management of services and tasks on your desktops and servers.

### Is an Evaluation Available?

Yes! A fully-functional 30-day evaluation download is available at [scriptlogic.com](http://scriptlogic.com) and will manage up to 10 machines.

### Is this the same as Desktop Authority's Patch Deployment for Desktops Option?

No. The Patch Deployment for Desktops (PDD) option is only available with Desktop Authority and provides patch deployment to desktop machines only. It does not provide patch capabilities for servers, patch rollback or extensive reporting.

## SYSTEM REQUIREMENTS

### Management

Windows 2000 SP3/2003/XP with IE 5.5 or later. 2GB+ required for patch repository

### Client Support

Patch Authority Plus supports Windows NT 4/2000/XP/2003 client and server operating systems.

### Language Support

Patch Authority Plus can deploy patches to the following languages: English, French, German, Italian, Spanish, Dutch, Danish, Finnish, Norwegian, Swedish, Portuguese (Brazil), and Portuguese (Portugal).

## LICENSING

Patch Authority Plus is licensed on a **per-machine** basis. Licenses do not distinguish between desktops and servers.

For pricing, contact your ScriptLogic reseller or call ScriptLogic at **1.800.813.6415** or **1.561.886.2420**